

H630

Material: Uterus & Placenta

Cr (mm): 30

Thickness(μm): 10

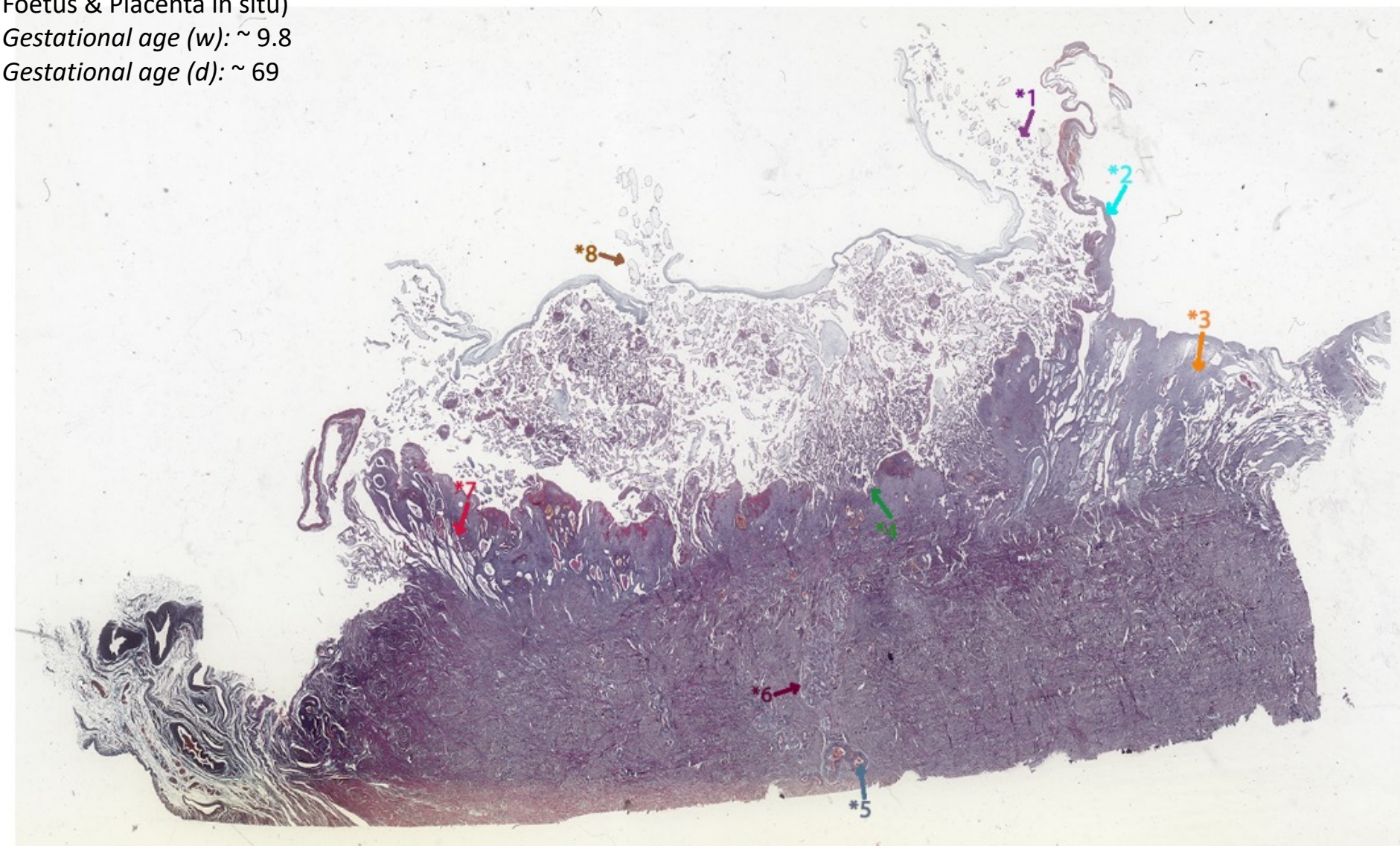
Sex: F

Particulars: HYSTERECTOMY (Uterus with

Foetus & Placenta in situ)

Gestational age (w): ~ 9.8

Gestational age (d): ~ 69



- *1 Villi regressing to form the chorion laeve (the membranes). The intervillous space still extends over the superficial pole of the chorionic sac as this stage of gestation.
- *2 Decidua capsularis is thin and non-glandular.
- *3 Decidua parietalis with active uterine glands.
- *4 The developing basal plate. The maternal-fetal interface is very irregular at this stage of gestation due to varying depth of trophoblast invasion and endometrial regression.
- *5 Arcuate arteries that run circumferentially around the uterine wall.
- *6 Radial artery. Branches of the arcuates that run towards the endometrium and terminates as basal arteries supplying the deep endometrium and spiral arteries that supply the placenta.
- *7 Decidua basalis. The uterine glands are still prominent in some areas, and the lumens contain heterogeneous secretions.
- *8 Chorionic plate with artefactual puncture allowing escape of villi.