

# H916

Material: Uterus & Placenta

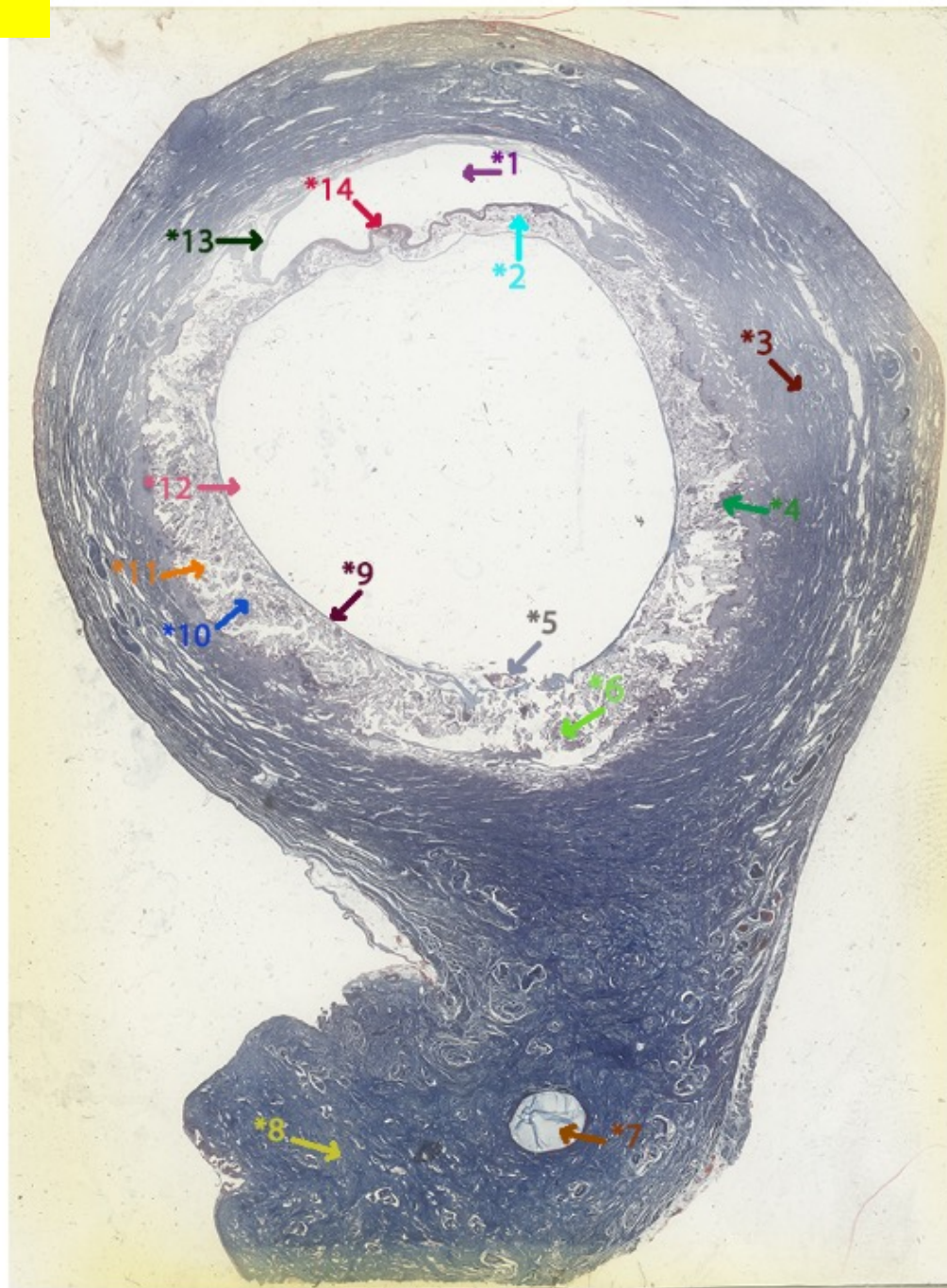
Cr (mm): 20

Amniotic fluid (cc): 11

Particulars: Uterus dilute BOUIN, FORMALIN

Gestational age (w): ~ 8.5

Gestational age (d): ~ 60



- \*1 Uterine cavity.
- \*2 Regressing villi of the chorion laeve.
- \*3 Myometrium.
- \*4 Decidua basalis.
- \*5 Remnants of yolk sac.
- \*6 The placenta is overlying the cervical os and so would be classified as a placenta praevia.
- \*7 Cervical mucus.
- \*8 Cervix.
- \*9 Chorionic plate.
- \*10 Placental villi.
- \*11 Developing basal plate.
- \*12 Amniotic cavity.
- \*13 Decidua parietalis.
- \*14 Decidua capsularis.