

H1053

Material: Uterus & Placenta

Cr (mm): 205

Fl (mm): 48

Sex: M

Amniotic fluid (cc): 475

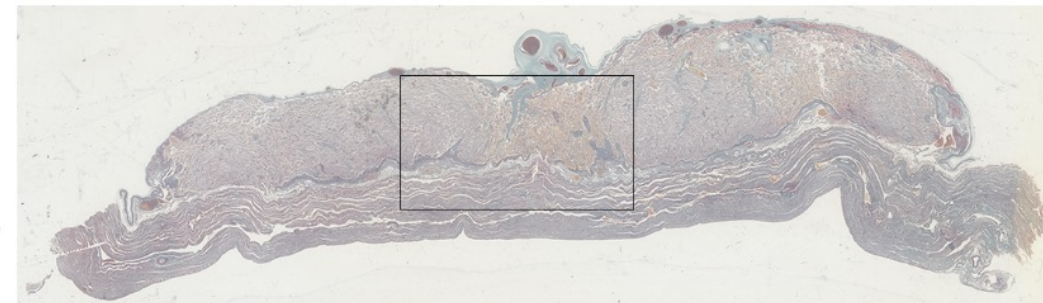
Foetus weight: 11lb 13 ¼ oz

Particulars: Umbilical cord 380 mm; Placenta 114x113mm. Uterus & Placenta FORMALIN fixed.

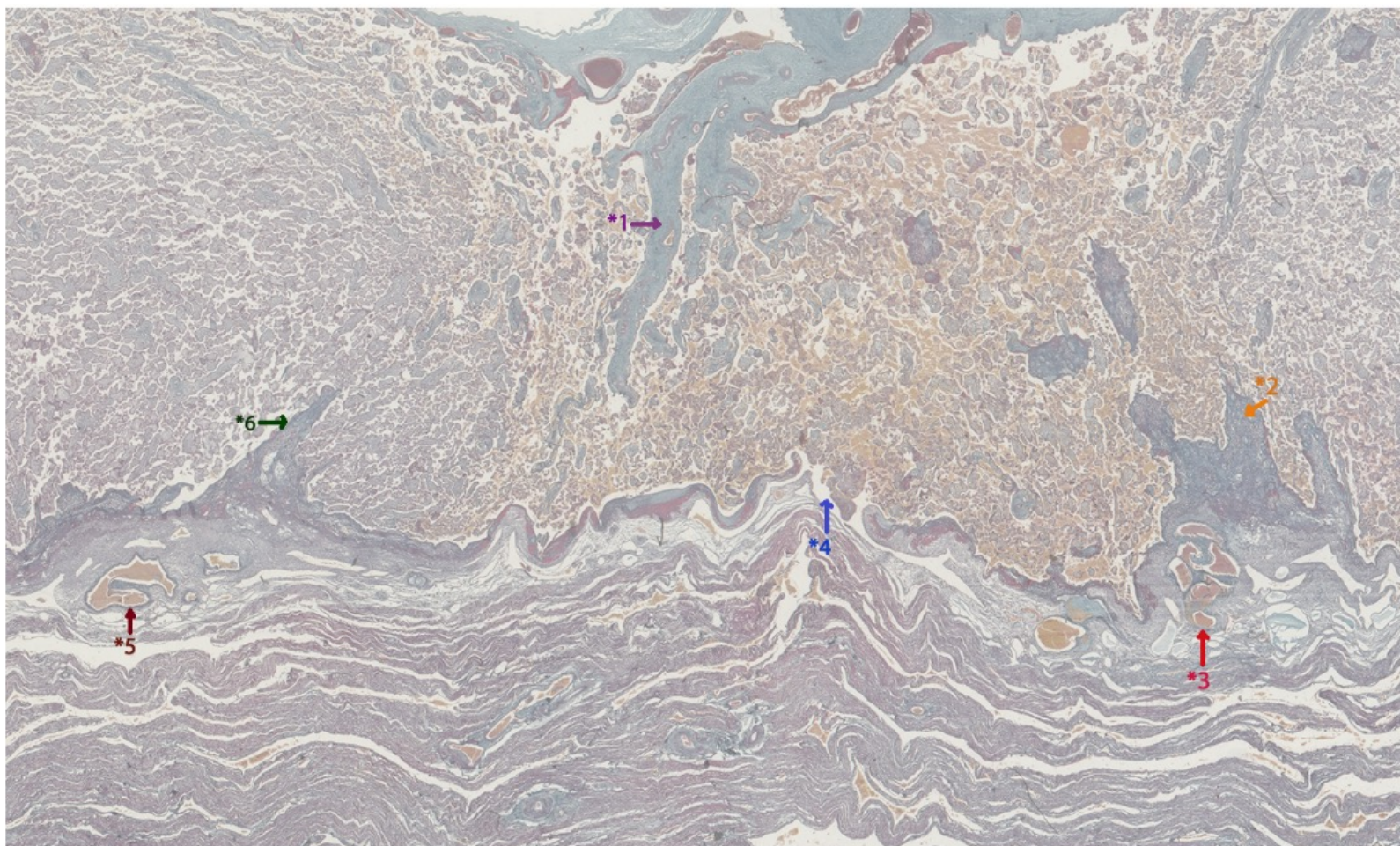
Chrome HX

Gestational age (w): ~ 27

Gestational age (d): ~ 190



Zoom basal plate



***1** Stem villus arising from the chorionic plate.

***2** Septum.

***3** Spiral artery.

In the human the openings of spiral arteries into the intervillous space are often close to a septum.

***4** Venous opening, with protrusion of villi.

***5** Spiral artery.

***6** Septum.

These are infoldings of the basal plate that partially subdivide the placenta into lobes.