

H1053

Material: Uterus & Placenta

Cr (mm): 205

Fl (mm): 48

Sex: M

Amniotic fluid (cc): 475

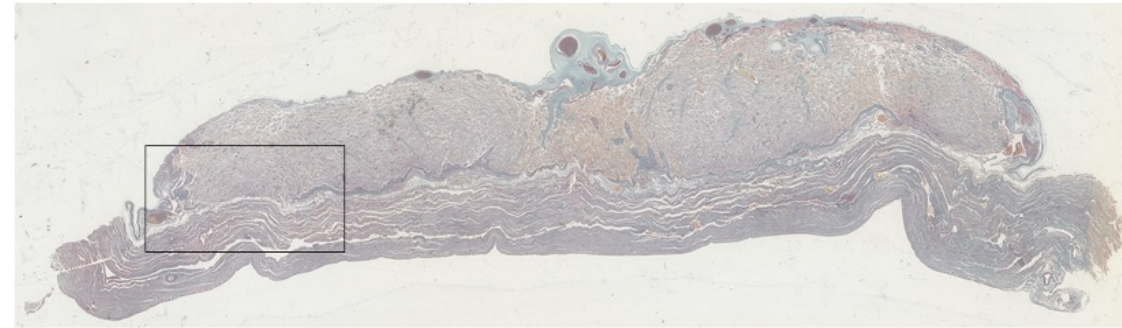
Foetus weight: 11lb 13 ¼ oz

Particulars: Umbilical cord 380 mm; Placenta 114x113mm. Uterus & Placenta FORMALIN fixed.

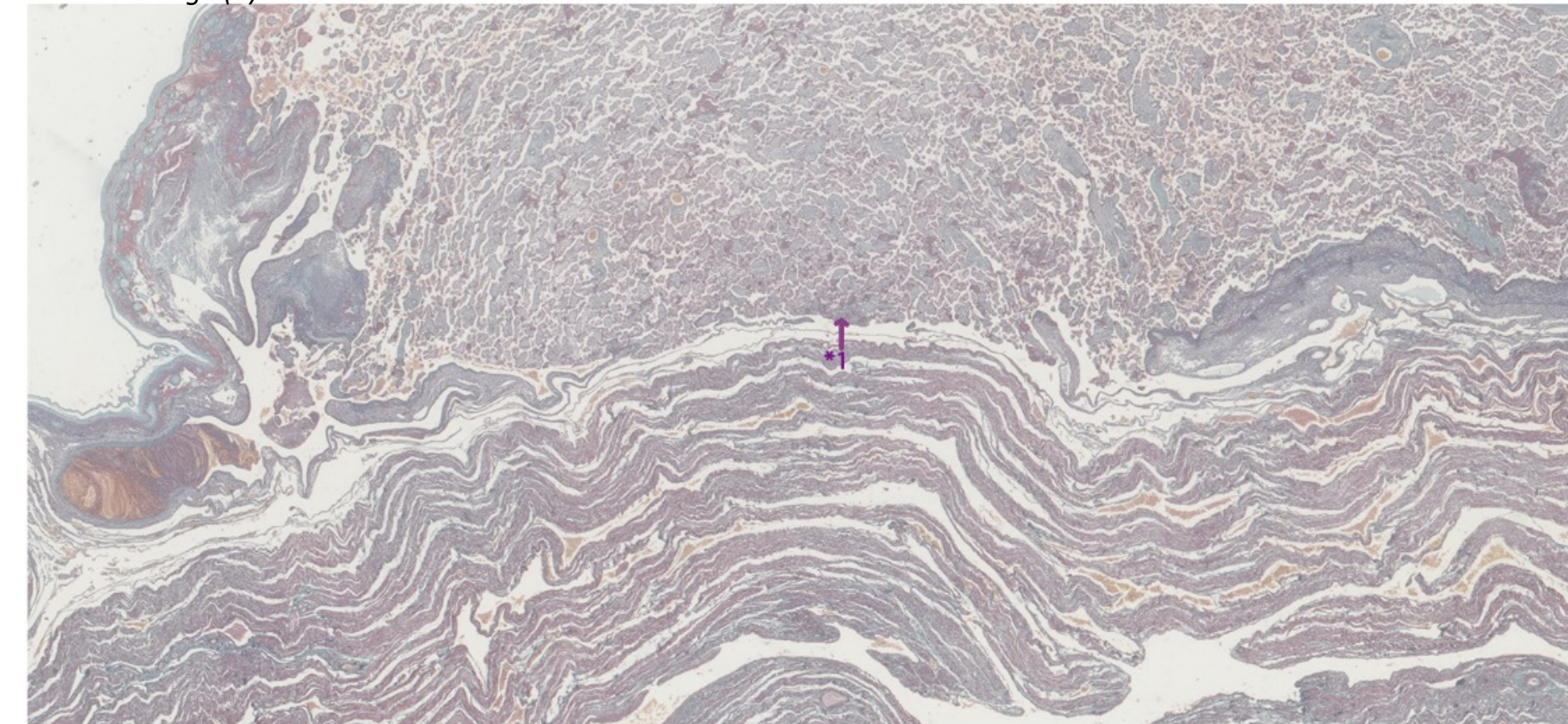
Chrome HX

Gestational age (w): ~ 27

Gestational age (d): ~ 190



Zoom basal plate



*1 Area where the basal plate appears very thin or deficient. The villi seem to be separated from the muscle fibers of the myometrium only by the endothelium of vascular channels beneath the placenta. There is no evidence of invasion of the myometrium, and so this is not a case of placenta accreta spectrum.