

H725

Material: Uterus

Cr (mm): 200

Fl (mm): 42

Thickness (µm): 7

Sex: F

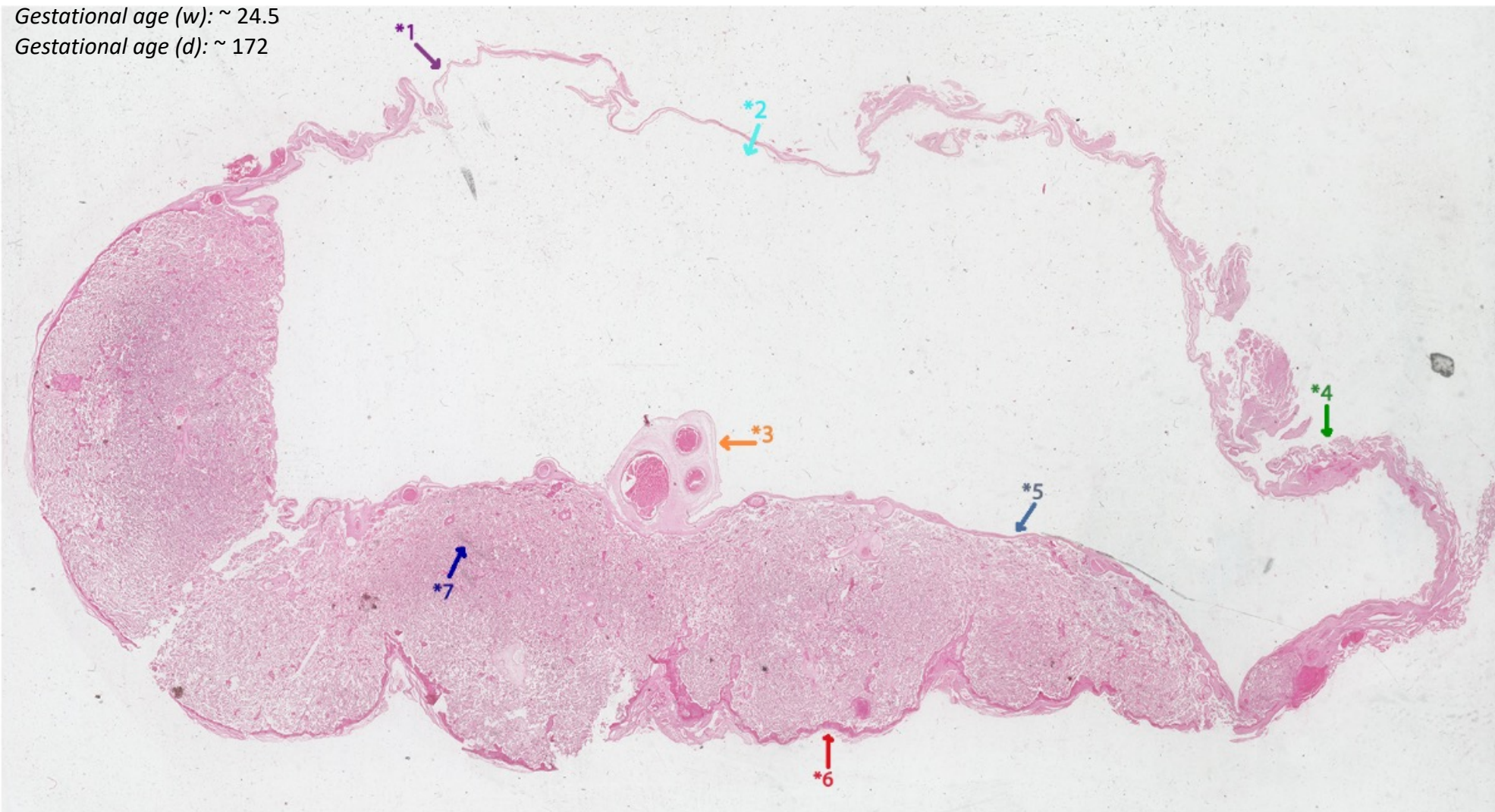
Amniotic fluid (cc): 195

Foetus weight: 7 ¼ oz

Particulars: HYSTERECTOMY – Taken for Sections Umbilical cord weight 1oz, Foetus injected CARDNY's, Placenta fixed in 10% FORMALIN

Gestational age (w): ~ 24.5

Gestational age (d): ~ 172



- *1 Smooth membranes.
- *2 Amniotic cavity.
- *3 Umbilical cord with two arteries and one vein.
- *4 Regressing villi forming the chorion laeve.
- *5 Chorionic plate.
- *6 Basal plate with Nitabuch's stria of fibrinoid.
- *7 Placental villi.