

# H1028

Material: Uterus & Placenta

Cr (mm): 118

Fl (mm): 24

Thickness( $\mu$ m): 25

Sex: M

Foetus weight (g): 196

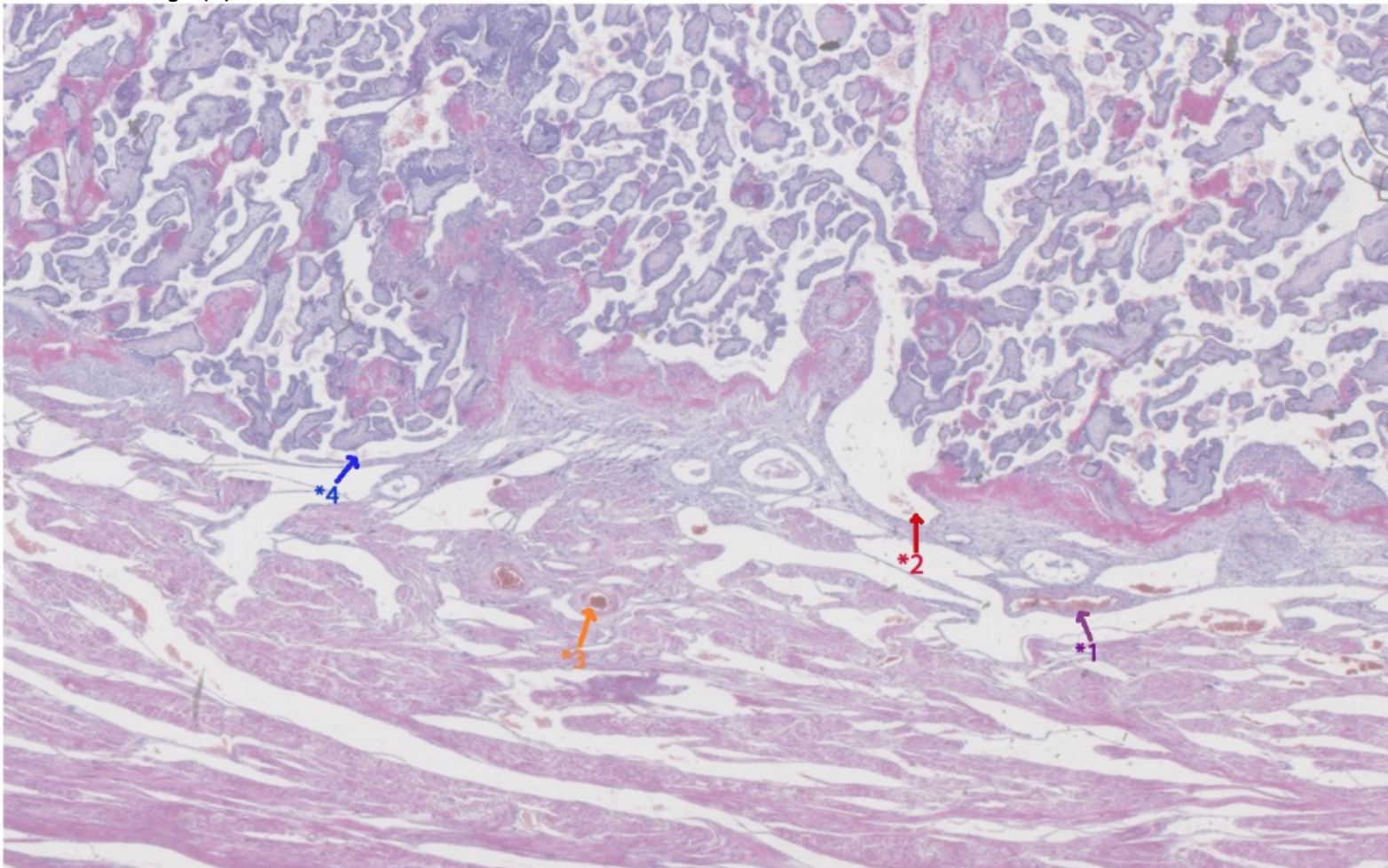
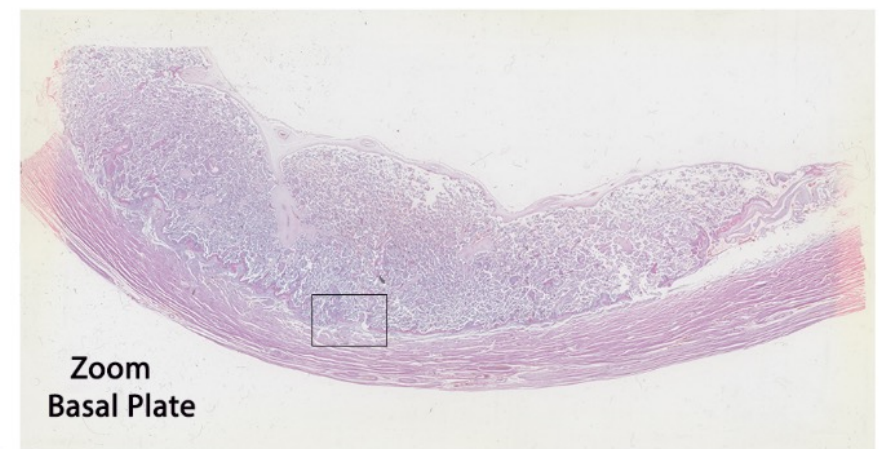
Amniotic fluid (cc): 195

Particulars: Uterus, Foetus & Placenta with large fibroids. Umbilical cord 305 mm. Placenta 11x8cm.

Foetus FORMALIN, Placenta ZENKER, FORMALIN

Gestational age (w): ~ 17

Gestational age (d): ~ 118



- \*1 Remodelled spiral artery approaching the basal plate.
- \*2 Funnel-shaped opening of a spiral artery through the basal plate. The shape serves to reduce the pressure and velocity of the inflowing maternal blood, minimising damage to the delicate villous trees.
- \*3 Terminal segments of a radial artery.
- \*4 Venous opening through the basal plate. Placental villi often protrude through these openings, and a few villi may even be deported into the maternal circulation.