

H1028

Material: Uterus & Placenta

Cr (mm): 118

Fl (mm): 24

Thickness(μm): 25

Sex: M

Foetus weight (g): 196

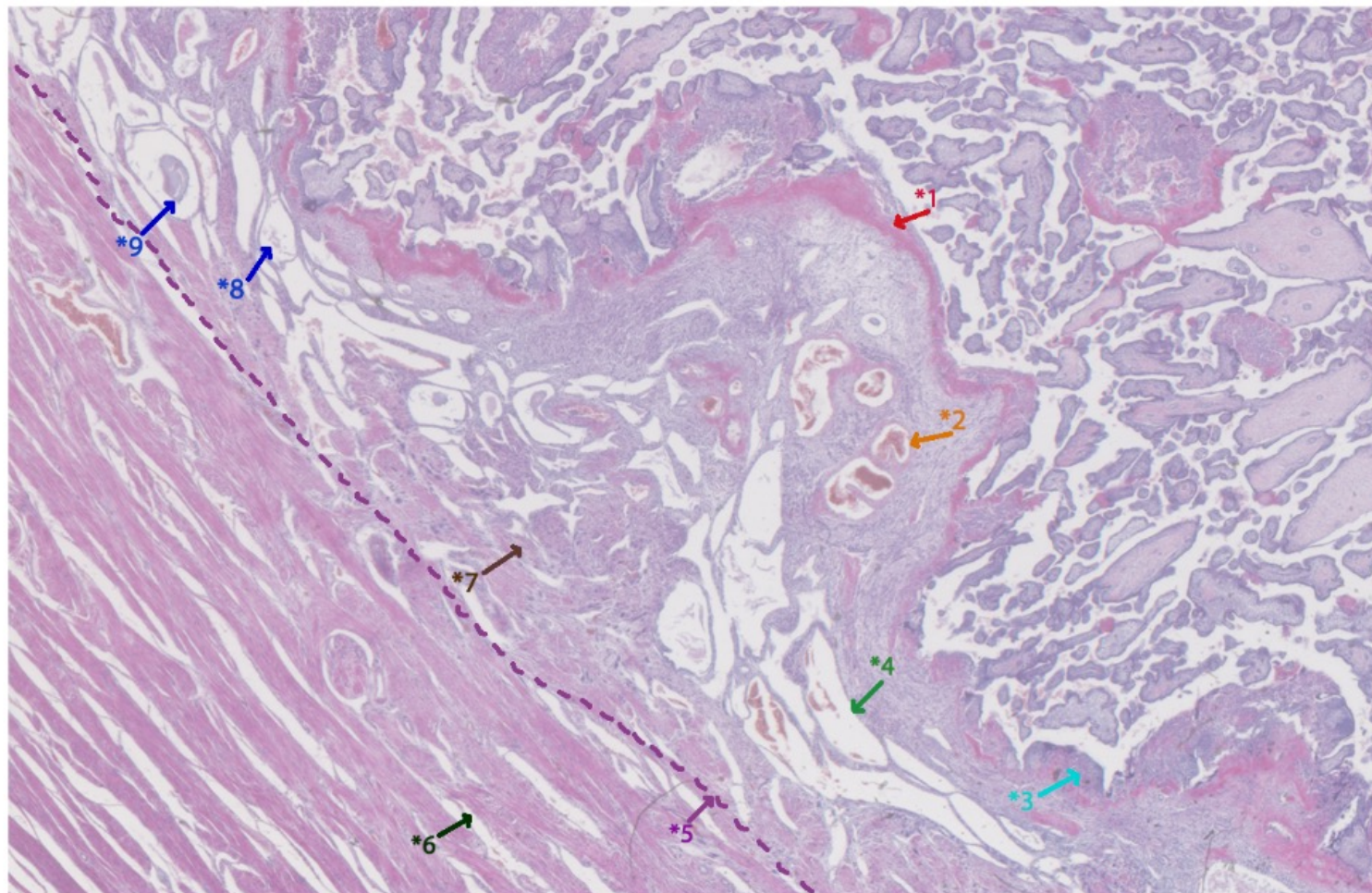
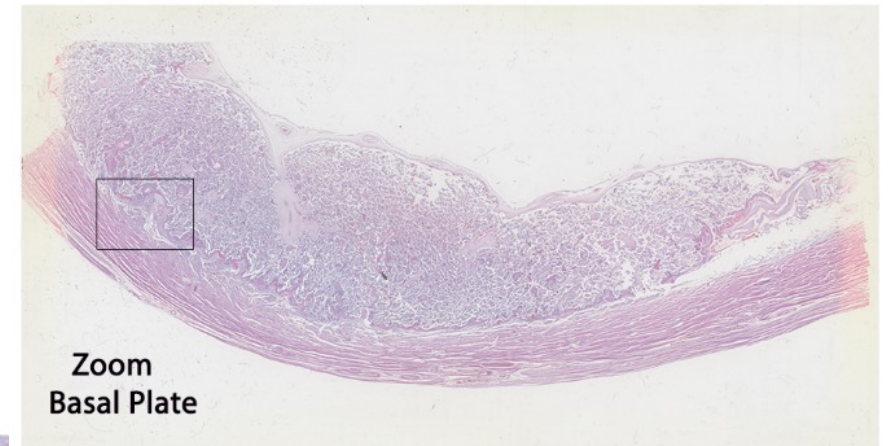
Amniotic fluid (cc): 195

Particulars: Uterus, Foetus & Placenta with large fibroids. Umbilical cord 305 mm. Placenta 11x8cm.

Foetus FORMALIN, Placenta ZENKER, FORMALIN

Gestational age (w): ~ 17

Gestational age (d): ~ 118



- *1 Nitabuch's stria.
- *2 Cross-sections of a spiral artery as it approaches the basal plate.
- *3 Basal plate.
This consists of a mix of fetal extravillous trophoblast and maternal decidual cells, separated by Nitabuch's stria of fibrinoid.
- *4 Maternal vascular plexus beneath the basal plate.
- *5 Boundary between the decidua and the myometrium.
- *6 Myometrium.
- *7 Maternal decidual cells, with darker staining multinucleated trophoblast giant cells interspersed amongst them.
- *8 - *9 Remnants of the endometrial (uterine) glands within the decidua basalis.