

H1028

Material: Uterus & Placenta

Cr (mm): 118

Fl (mm): 24

Thickness(μm): 25

Sex: M

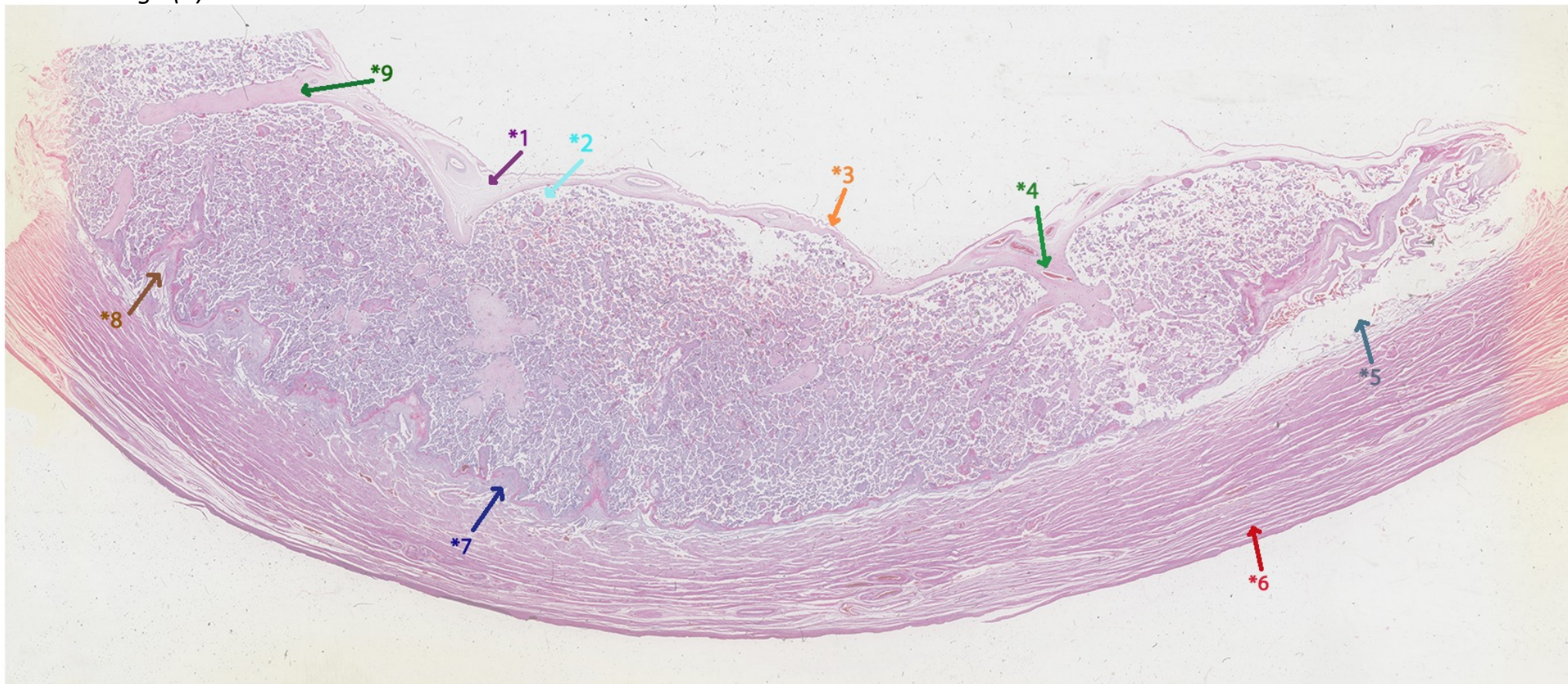
Foetus weight (g): 196

Amniotic fluid (cc): 195

Particulars: Uterus, Foetus & Placenta with large fibroids. Umbilical cord 305 mm. Placenta 11x8cm. Foetus FORMALIN, Placenta ZENKER, FORMALIN

Gestational age (w): ~ 17

Gestational age (d): ~ 118



- *1** Chorionic plate with branches of umbilical arteries and vein.
- *2** Subchorionic lake.
- *3** Amnion.
- *4** Stem villus.
- *5** Separations of the basal plate from the endometrium during processing.
- *6** Myometrium.
- *7** Decidua basalis.
- *8** Septum forming by infolding of the basal plate.
- *9** Stem villus.