

**H789**

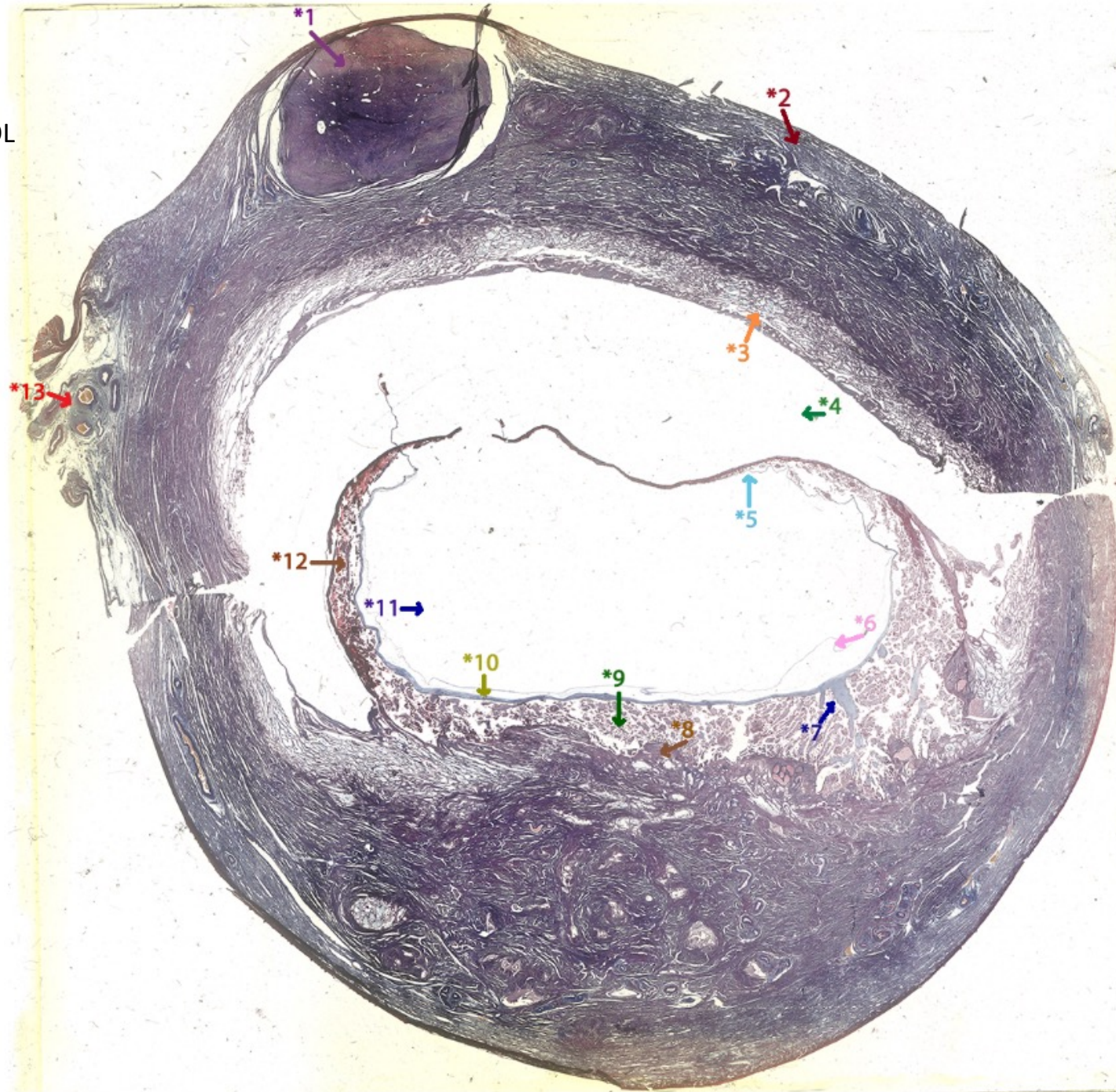
*Material:* Placenta

*Cr (mm):* 36

*Particulars:* HYSTERECTOMY (Rec'd FORMOL SALINE). Specimen not fixed inside uterus.

*Gestational age (w):* ~ 10.4

*Gestational age (d):* ~ 73



- \*1 Fibroid.
- \*2 Myometrium.
- \*3 Decidua parietalis.
- \*4 Uterine lumen.
- \*5 Decidua capsularis and membranes.
- \*6 Amnion.
- \*7 Stem villus.
- \*8 Decidua basalis.
- \*9 Placental villi.
- \*10 Chorionic plate.
- \*11 Amniotic cavity.
- \*12 Regressing villi forming chorion laeve.
- \*13 Mesometrium with branches of uterine artery.